

Product range



THE ARMREST MANUFACTURER

Frameco 

Frameco

History and Background

Frameco has been developing and manufacturing armrests for heavy-duty vehicles since 1983.

With more than 30 years of experience, we have learned what the customer wants. We know that the need varies from driver to driver, and from vehicle to vehicle.

The world does not stop revolving even if you

would like it to, so we at Frameco always aim to adapt to the latest breakthroughs. Therefore we meet problems with innovating ideas and cost efficient ergonomics made to last.



THE ARMREST MANUFACTURER

Quality and Environment

Our corporate policy is "Frameco's work and products must satisfy the customers and the authorities demands and expectations on quality and environmental management".

Our two focus areas are:

Customer focus: The customer always decides what is right. Quality, acceptable environmental impact and the customer's reaction is the foundation on which our improvements are made.

Environmental focus: The environmental impact

on air, water and land is to be as low as possible at all times. We must always meet the demands of our customers and government. Frequent meetings with the local authorities environmental department, will ensure that we are kept up to date with the current laws and legislations.

Frameco AB is certified according to ISO 9001:2008 and ISO 14001:2004 by British Standards Institution.



Frameco design

Our armrests can be fitted with a wide variety of pads. The common denominator of all the pads is that they are all made of puritan and have an ergonomic shape. The size variation makes it possible to suit your specific needs.

We can alter our standard solutions in close cooperation with our clients, to make the optimal package for your specific project. This may include electrical wiring, adding joysticks and modifying standard components.

We also have the capabilities to develop an armrest that is unique just for you, were we draw upon our many years of experience when it comes to making ergonomic driving environment.



310 Ergo Comfort

The 310 Ergo Comfort stands for comfort, load alleviation and high flexibility. Comfort and relief was the main focus during the development process of this armrest. It is a very flexible armrest with many adjustment capabilities, and is very

well suited for a lightweight joystick. This kind of armrest is commonly found in trucks, construction vehicles and forklifts. It can also be found on 24-hour control room seats.



Features

The 310 Ergo Comfort can be fitted with a wide range of seat brackets.

Height, width and length adjustments can be made independently.

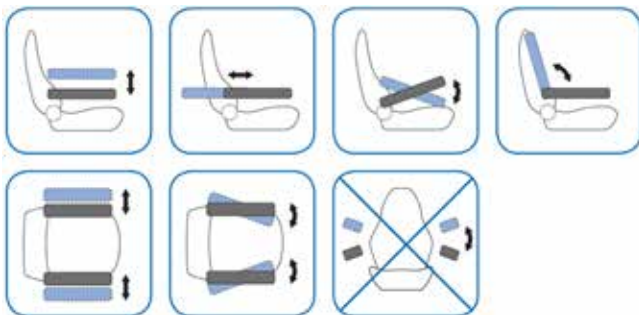
Pad can be tilted and angled inwards.

Several different arm pads as option.

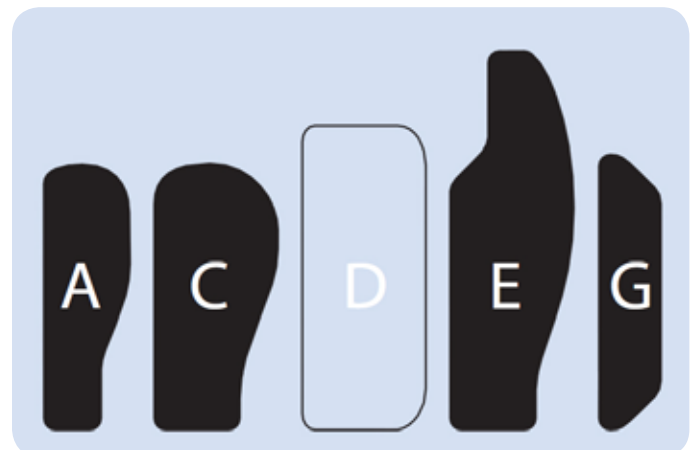
Armrest is hinged for easy access.



Adjustments



Available pads



600 Ergo Flex Light

The 600 Ergo Flex Light stands for flexibility. At the same time it is a steady solution for tractors, together with other agricultural- and woodland vehicles, as well as construction vehicles where

a lightweight joystick is used. It is a friction armrest, which can be delivered with either a fixed or an adjustable pad.



Features

Stable and flexible solution.

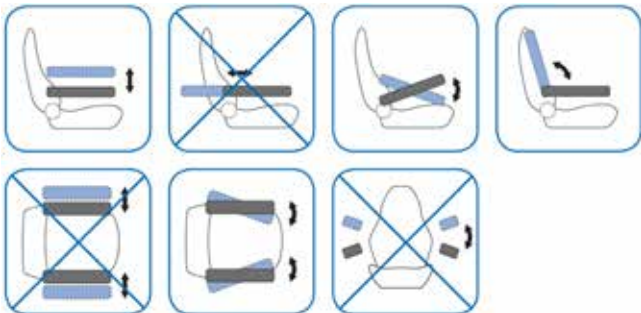
Pad can be tilted and angled inwards.

Armrest is hinged for easy access.

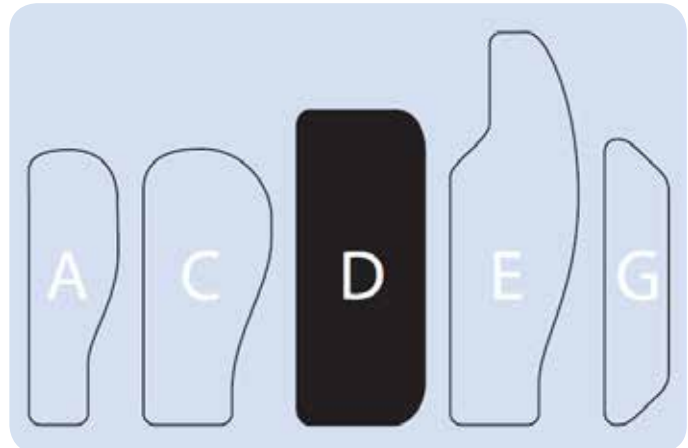
Available pads 600S



Adjustments



Available pads 600



2000 Ergo Flex

The 2000 Ergo Flex armrest stands for optimal flexibility and seamless adjustability. In many vehicles it is important to have an armrest with the best possible flexibility. This friction armrest has seamless adjustability in all directions, to fit every

driver in every situation. The 2000 Ergo Flex is a popular choice for forest- and woodland equipment, and has several extra accessories.



Features

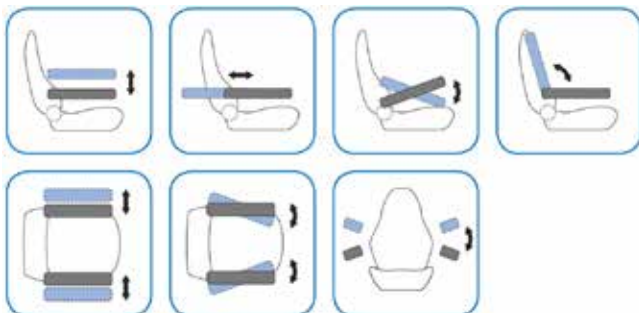
The 2000 Ergo Flex comes in 5 different options.

- 2000 Ergo Flex
- 2000S Ergo Flex
- 2000E Ergo Flex
- 2000ES Ergo Flex
- 2000 Stable Ergo Flex

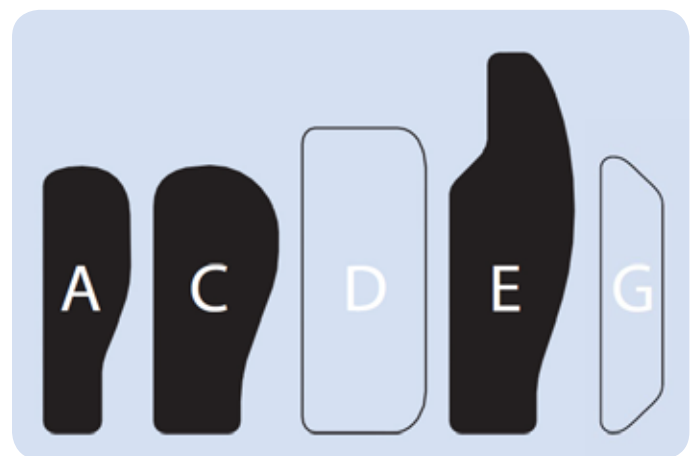
Height, width and length adjustments can be done independently.

Armrest is hinged for easy access.

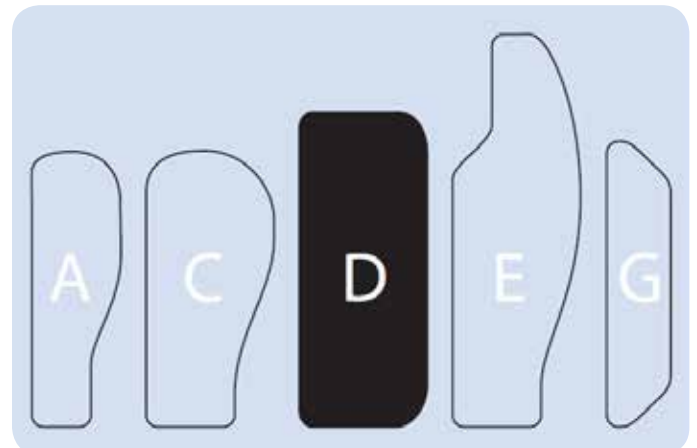
Adjustments



Available pads 2000S, 2000ES, 2000 Stable



Available pads 2000, 2000E



5200 Ergo Sturdy

The 5200 Ergo Rigid stands for stability and heavy-duty. Stability was the key concern, when this armrest was designed. It can easily manage heavy loads in all directions, and works excellent even when fitted with a portable computer.

Seats with this kind of armrest are often found in the foresting and mining industry, but it is also a popular choice for large cranes and construction vehicles.



Features

The 5200 Ergo Rigid can be fitted with a wide range of seat brackets.

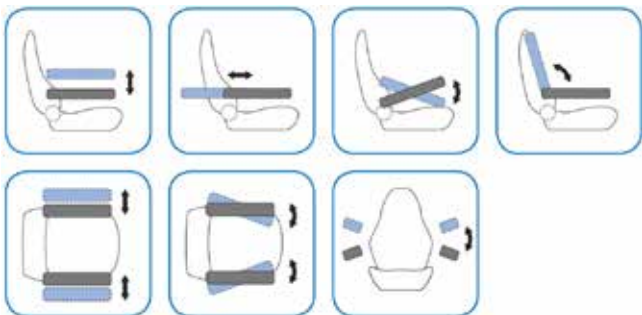
Height, width and length adjustments can be made independently.

Pad can be tilted and angled inwards.

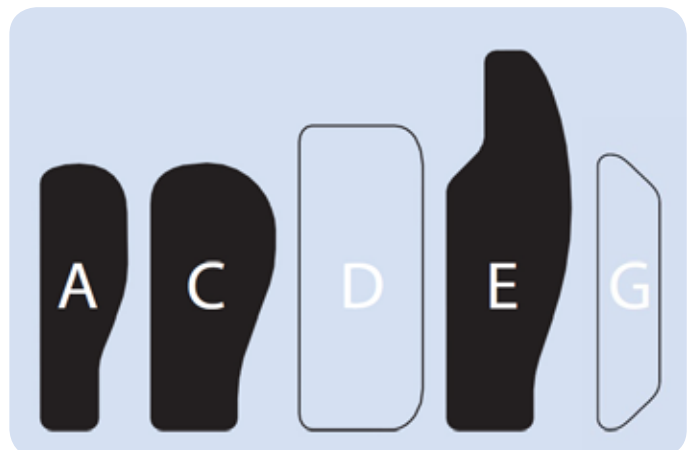
Several different arm pads as option.

Armrest is hinged for easy access.

Adjustments



Available pads



Pads

A-pad

The A pad is a slim pad made of polyurethane with a side support for extra comfort. The pad has a wooden core and can be equipped with joint and control holder.

Width: 60-90 mm, Length: 280 mm



C-pad

The C pad is a larger pad made of polyurethane with a larger side support than the A-pad. The pad has a wooden core and can be equipped with joint and control holder.

Width: 90-130 mm, Length: 280 mm



D-pad

The D pad is a universal flat polyurethane pad with ridges on the sides as support. The pad has a wooden core and can be equipped with joint and control holder.

Width: 130 mm, Length: 320 mm



E-pad

The E pad is a large pad designed to give ultimate support. The pad can be equipped with joint and control holder and is made of polyurethane with a wooden core.

Width: 90-130 mm, Length: 400 mm



G-pad

The G pad is our smallest pad designed for small cabins with little space. The pad is made of polyurethane and has a wooden core.

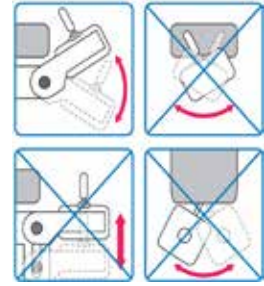
Width: 65 mm, Length: 285 mm



Joists

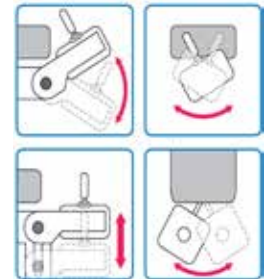
One axis joint

Suitable for 310



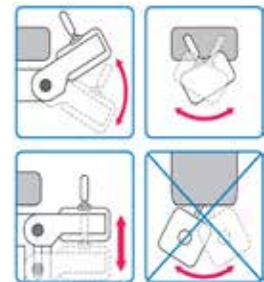
Multi axis joint

Suitable for 310



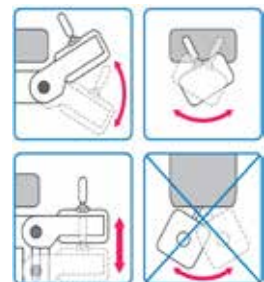
Multi axis joint

Suitable for 2000



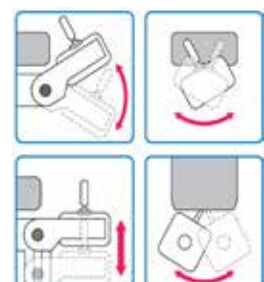
Multi axis joint

Suitable for 2000E



Multi axis joint

Suitable for 600S, 2000S, 5200



Control holders

EHC

This control holder has a $\varnothing 127$ mm semicircle mounting hole. It is developed to fit a Parker PCL 4 handle.



ICL

The ICL control holder has a $\varnothing 102$ mm mounting hole and 80 mm square hole pattern for fastening. This control holder is developed to fit a Parker ICL 4 handle.



ICM

The ICM control holder has a $\varnothing 70$ mm mounting hole and is available for both left and right hand side. This control holder is developed to fit a Parker ICM 4 handle.



Prof 1

This control holder has a $\varnothing 77$ mm mounting hole and 64,3 mm square hole pattern for fastening. This control holder is available for both left and right hand side and is developed to fit a Sauer-Danfoss Prof 1 handle.



Isolator

The Isolator is a low profile design to handle substantial loads without slack. The Isolator is based on a bearing shaft design providing a rigid and durable product.

The Isolator damps longitude vibrations and shocks for all types of machines. The damping stroke is +/- 40 mm.

Features

Compact and rigid design.

Universal hole pattern.



Product by
ergoseat

TUBO Stand

The TUBO Stand comes either with or without an integrated swivel for rotation. Both the height adjustment and the rotation are mechanically locked. The stroke for the stand is 50 mm, and

the rotation of the swivel is 0 - 180°. The TUBO Stand can also be customized for marine use with for example a foot rest.

Features

With or without rotation.

Universal hole pattern.

Stroke 50 mm.

Rotation 0-180°. (Option)



Product by
ergoseat

Frameco AB
Installatörv 19
SE-461 37 Trollhättan
Sweden

Tel: +46 (0)520-48 82 30

info@frameco.se
www.frameco.se