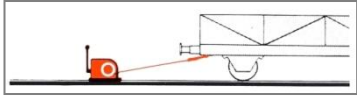


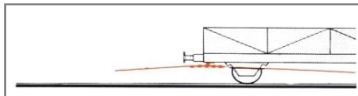
**Product division
plant technologies**



Shunting Capstan and Open Pull Rope Layout

For simple shunts with single wagons or rakes

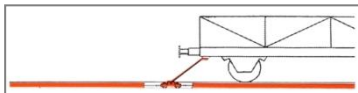
Tractive power up to 30 KN im UIC rating
50 KN
Towing capacity up to 1000t



Reversible Pull Rope and Sling Chain

For bulk goods loading with single wagons or rakes

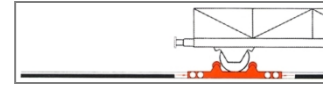
Tractive power up to 30 KN im UIC rating
100 KN im industrial sidings
Towing capacity up to 600t / 2000t



Reversible Pull Rope and Underfloor or Surface Control

For single wagons or rakes, underfloor control for level paved track; surface control for open track

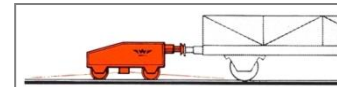
Tractive power up to 30 KN im UIC rating,
50 KN im industrial sidings
Towing capacity up to 600t / 1000t



Reversible Pull Rope and Wheelset Trick

For single wagons or rakes, automatic shunting without operating personnel in the track area

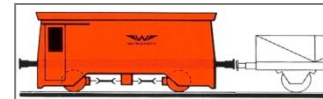
Tractive power up to 30 KN im UIC rating,
60 KN im industrial sidings
Towing capacity up to 600t / 1200t



Reversible Pull rope and Buffer Truck

For rakes at bulk goods loading stations

Tractive power up to 150 KN
Towing capacity up to 3000t



WINDHOFF Tele-Trac Shunting Vehicles

For wagon rakes at bulk goods loading stations; fully automatic shunting, radio control

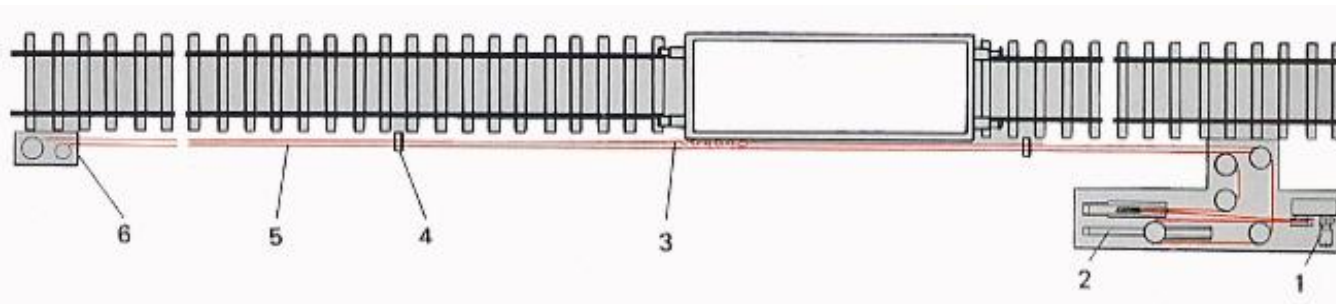
Tractive power up to 480 KN
Towing capacity up to 8000t



WINDHOFF 2-Way Road/Rail Shunting Vehicles

For the flexible employment in the depot and also for loading of bulk goods

Tractive power up to 100 KN
Towing capacity up to 2800t



- 1 Drive unit
- 2 Tensioning device
- 3 Means of fastening (e.g. chain)
- 4 Rope carrying pulley
- 5 Traction cable
- 6 Cable rollers



Windhoff - buffer car at a loading line.



Reversible rope winch, here with sling chain and C-hook for pulling forces up to 30 kN (for UIC application).



Wheelset cart in combination with an automatic drag shoe placing for track safety.

Wheelset cart:
Pressure roller pair engaged.





2-Way-Road/Rail-Vehicles

Batterie floated 2-Way-Road/Rail-Vehicles

Typ ZRW 15 AEM

The vehicles are supplied with an open or closed driver's cab.





Locomotive RL 120 H

Technical data:

Track gauge:	1.435 mm
Length buffer-to-buffer:	7,100 mm
Service weight:	40.000 kg

Start-up towing force:	120 kN
Remote radio control	
Diesel engine:	330 kW

Max. speed:	15 km/h
Towing speed:	25 km/h



Tele-Trac RW 9/13 AEM
Customer: Hegenscheidt



Windhoff Tele-Trac RW 100 EM for
Eko Stahl GmbH, Eisenhüttenstadt



Windhoff Tele-Trac RW 70 AEM
Customer: Ver. Schweizer Rheinsalinen



RW 120 DH for
Hafenbetriebe Brunsbüttel

RW 120 DH,
Customer: Veitsch Radex



ZRW 60 DH,
Tractive force: 1200 to
Batterie-electric drive
Customer: BASF Ludwigshafen



ZRW 140DH with diesel-hydraulic drive,
Tractive force: 2.800to
Customer: Neuss Düsseldorfer Häfen



Scrap hopper transport car 155to,
Customer: DEW Witten



Scrap metal transport vehicle with 90to load capacity
Custmer: Elwood Steel Belgium



Scrap metal transport vehicle with 90to load capacity
Customer: Swiss Steel, Switzerland

Casting Car 110 t with hydraulic lifting device and crosswise sliding equipment
Customer:: Stahlwerk Bous



Ladle roll-over device.
Load capacity:: 90 to
Customer: Ugine & ALZ, Gent



Ladle tilting device
Load capacityt: 230 to
Customer: Ugine & ALZ, Gent

Lance manipulator with lance magazine and temperature measuring and sampling device for a pig iron desulfurisation plant.
Customer: Sidmar, Gent



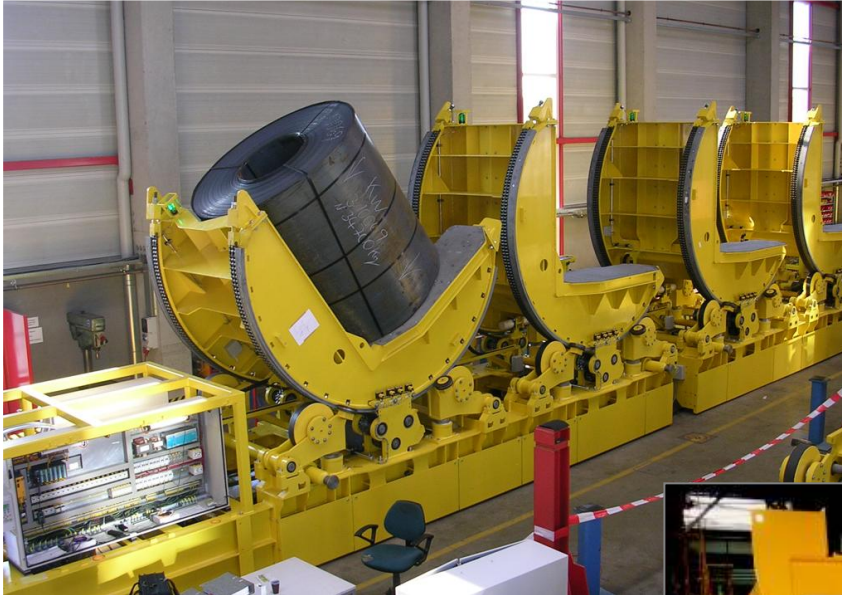
Torpedo ladle vehicle, ladle payload 200 tons
Vehicle service weight: 190 tons ;
Gross weight: 390 tons



Segment transfer car with bogies,
Load capacity: 140 tons,
Customer: Sidmar, Gent

2 Hooded handling carts for flue gas extraction for
pig iron desulphurisation
Customer: Voest Alpine, Linz, Austria





Coil transport vehicles with 4 tilting devices
and a load capacity of each 35 tons
Client: Sidmar



Coil transport vehicle, batterie-electric drive and a
capacity load of 50 to.
Client: Toscelik, Türkei



Coil transport, Krupp, Eichen



2 Coil transport vehicles, load capacity 180to each.
Radio remote-controlled for use at batch annealing
Client: Thyssen Krupp Stahl, Bochum



Coil transport vehicle, load capacity 2 x 32 to.
Clientr: Thyssen Krupp Stahl, Ferndorf



Coil transport vehicles, load capacity 96 tons
Client: Salzgitter Flachstahl GmbH



Coil transport vehicle, load capacity 30 to
Customer: Ugine & ALZ



Customer: SMS Salzgitter



Interdepartmental coil transport from hot line 500°C.
Customer: Voest-Alpine Stahl, A-Linz



Magnetic line guided coil transport vehicle
CTW 30 AEM.
Customer: Krupp Thyssen Nirosta, D-Krefeld



Road/Rail Pallet Transporter for liquid
aluminium laddles- and anodes up to 40to

Cable reel transporter;
Customers: Dätwyler AG, Switzerland

